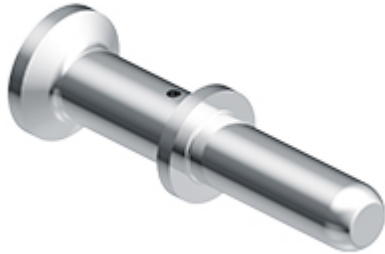


Part number

# CX7MA 16 XF



Male crimp contact, CX7 series, 70 A, turned silver plated, wire cross section 16 mm<sup>2</sup>, AWG 6 - 5, extra-flexible Class 6 conductor

Product description		Material properties	
Product type	Crimp contact	Main material	Copper alloy
Series	CX7		Compliant with exemption 6(c): copper alloy containing up to 4% lead by weight
Gender	Male	RoHs conformity	
Technical data		China RoHs - EFUP	50
Current	70 A	REACH SVHC substances	Yes
Wire cross-section	16,00 mm <sup>2</sup>		Lead
AWG size	6 - 5	SCIP number	C0979fba-9907-458f-a94a-db781440f273
Contact type	Turned silver plated	Approvals / Standards	
Further technical details		Certifications	CSA, EAC
Mating cycles	≥ 500	UL	ECBT2
Contact resistance	≤ 0,5 mΩ	cUL	ECBT8
Weight	9,30 g	General ordering information	
Operating temperature range (min, max)	-40°C ... +125°C	EAN13 code	8015747252690
Conductors stripping length	15 mm	eCl@ss 8.1	27440204
		ETIM 7.0	EC000796
Packaging Information			
Sub-packaging length			50,00 mm
Sub-packaging height			44,00 mm
Sub-packaging width			50,00 mm
Sub-packaging weight			0,15 kg
Sub-packaging volume			0,11 dm <sup>3</sup>
Sub-packaging description			Plastic box
Sub-packaging quantity			16 Pcs
Sub-packaging EAN barcode			8015747252782

Part number

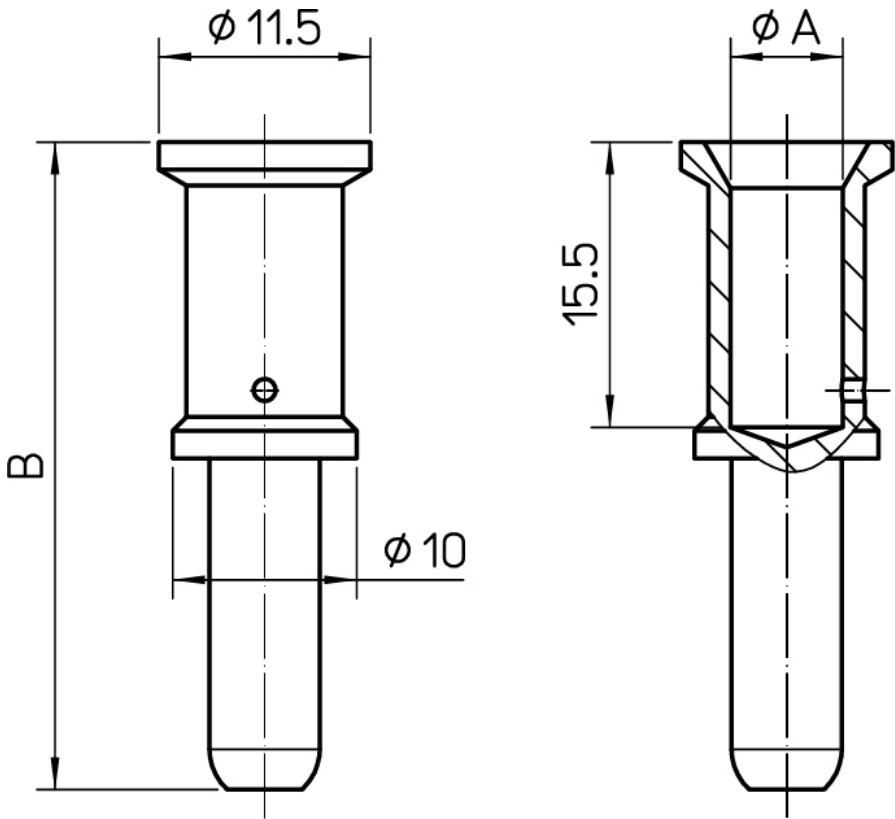
# CX7MA 16 XF



Catalogue drawings

PART NUMBERS SILVER PLATED	øA	B	WIRE GAUGE		STRIPPING LENGTH mm
	mm	mm	mm <sup>2</sup>	AWG	
CX7MA 6.0	3,5	36	6	10	15
CX7MA 10	4,3	35,2	10	7	
CX7MA 16	5,5	35,2	16	5	
CX7MA 16 XF	6,1	35,2	16	3	
CX7MA 25	7,0	35,2	25	3	

Catalogue drawings



## Notes

Dimensions shown in mm are not binding and may be changed without notice.

### California Proposition 65 Information



### WARNING

This product can expose you to lead and its compounds, known to the State of California to cause cancer and/or reproductive toxicity. For more information go to [www.P65Warnings.ca.gov](http://www.P65Warnings.ca.gov).

---

With CXC inserts, nominal current is up to 80 A, according to the current derating diagram.

---