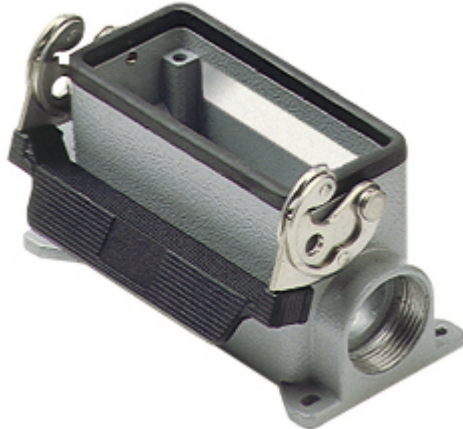


Part number

CMP 06 L2



Surface mounting housing, 830V series, with 1 lever, Pg21 x 2 cable entry, size "77.27"

Product description

| | |
|---------------------|------------------------------|
| Product type | Surface mounting housing |
| Series | 830V |
| Closing type | With 1 lever |
| Size | Size 77.27 |
| Cable entry | With cable entry Pg21 x 2 |

Technical data

| | |
|--------------------------------|--------------------|
| IP degree of protection | IP65 / IP66 / IP69 |
|--------------------------------|--------------------|

Further technical details

| | |
|---|----------------|
| Weight | 294,00 g |
| Operating temperature range (min, max) | -40°C...+125°C |

Material properties

| | |
|------------------------------|---------------|
| Colour | RAL 7040 grey |
| RoHs conformity | Compliant |
| China RoHs - EFUP | E |
| REACH SVHC substances | No |

Approvals / Standards

| | |
|-----------------------|---------|
| Certifications | DNV, BV |
| UL | ECBT2 |
| cUL | ECBT8 |

General ordering information

| | |
|-------------------|---------------|
| EAN13 code | 8015747031486 |
|-------------------|---------------|

Packaging Information

| | |
|----------------------------------|-------------------|
| Sub-packaging weight | 1,47 kg |
| Sub-packaging description | Plastic packaging |
| Sub-packaging quantity | 5 Pcs |
| Sub-packaging EAN barcode | 8015747103794 |

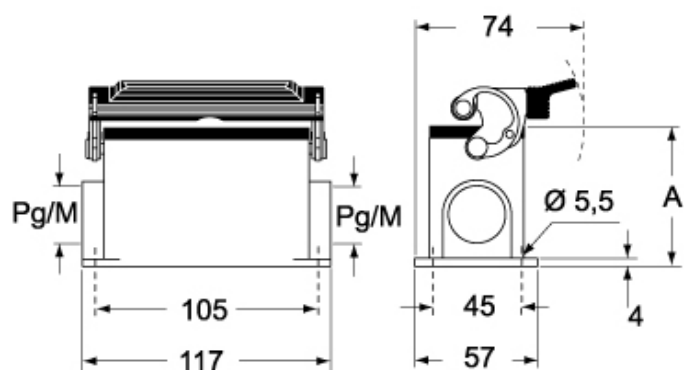
Part number

CMP 06 L2

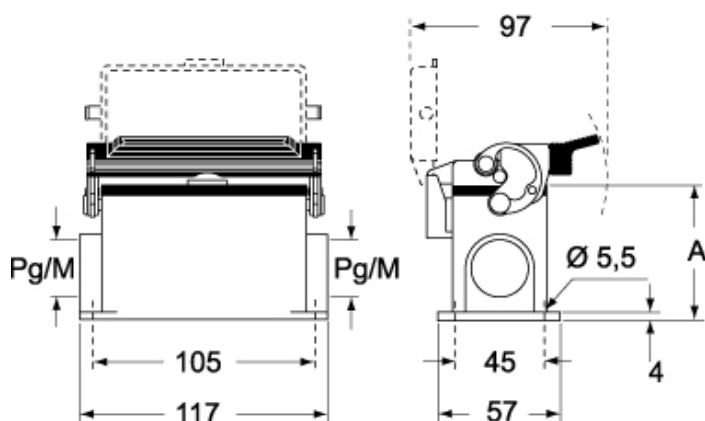


Catalogue drawings

CMP L CMAP L - MMP L MMAP L



CMP LS CMAP LS - MMP LS MMAP LS



| | A |
|--------------------------|----------|
| CMP L / MMP L | 63 |
| CMAP L / MMAP L | 77 |
| CMP LS / MMP LS | 63 |
| CMAP LS / MMAP LS | 77 |

Notes

Dimensions shown in mm are not binding and may be changed without notice.