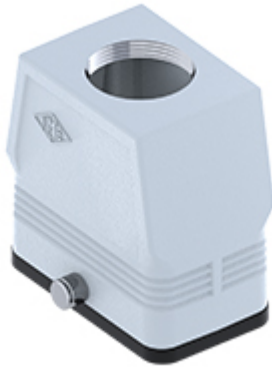


Part number

CFV 10 GYC29



Hood, CENTRAL LEVER series, with 2 pegs,
Pg29 top cable entry without adapter, size
"57.27", high construction

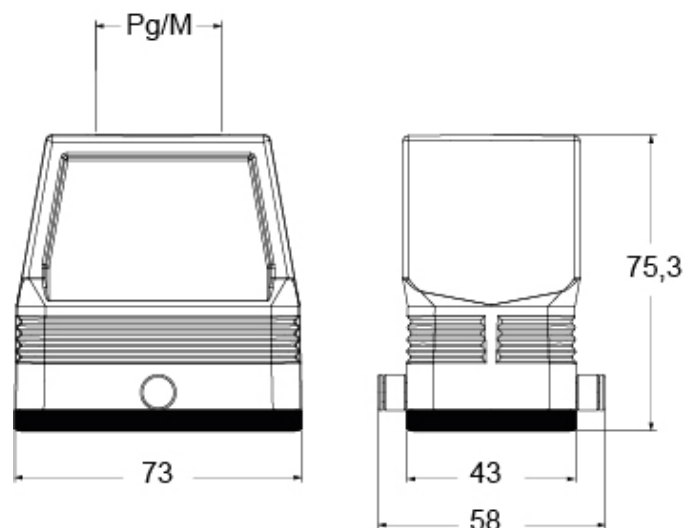
Product description		Material properties	
Product type	Hood	Other materials	Gasket: NBR
Series	CENTRAL LEVER	Colour	RAL 7040 grey
Closing type	With 2 pegs	RoHs conformity	Compliant
Size	Size 57.27	China RoHs - EFUP	E
Cable entry	Top cable entry Pg29	REACH SVHC substances	No
Specification	High construction	Approvals / Standards	
Technical data		UL	ECBT2
IP degree of protection	IP65	cUL	ECBT8
Further technical details		General ordering information	
Operating temperature range (min, max)	-40°C...+125°C	EAN13 code	8015747266987

Part number

CFV 10 GYC29



Catalogue drawings



Notes

Dimensions shown in mm are not binding and may be changed without notice.